



TA CHEN



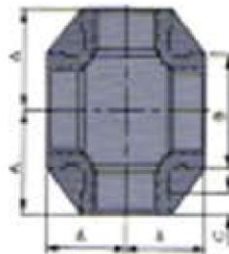
STAINLESS STEEL SCREWED FITTING



STAINLESS STEEL SCREWED FITTING

- **150 LB / S/S NPT THREADED FITTINGS**
- **CF8 [204] & CF8M [316], THREADS CONFORM TO ANSI B 2.1**
- **ALL FITTING DIMENSIONS CONFORM TO ANSI B 16.3, MATERIAL PER ASTM STD.**

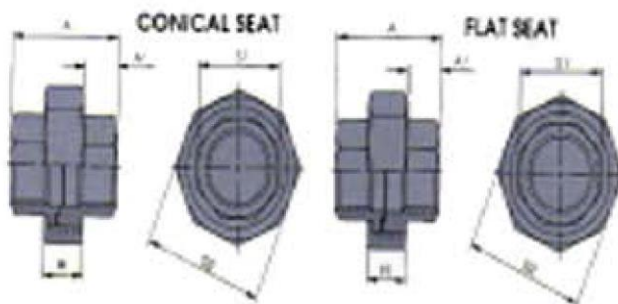
CROSSES BANDED EQUAL



(Unit: inch)

Size	1/4	1/4	3/8	1/2	3/4	1	1 1/4	1 1/2	2	2 1/2	3	4
A	0.69	0.81	0.95	1.12	1.31	1.50	1.75	1.94	2.25	2.70	3.08	3.79
B	0.69	0.84	1.01	1.20	1.46	1.77	2.15	2.43	2.96	3.59	4.28	5.40
C	0.20	0.21	0.23	0.25	0.27	0.30	0.34	0.37	0.42	0.48	0.55	0.66

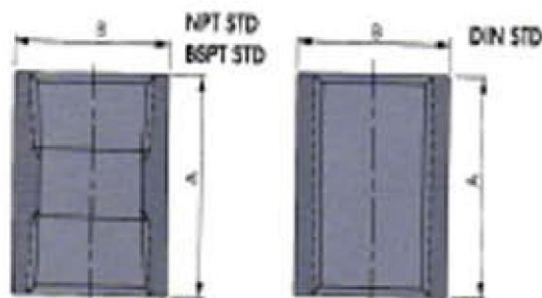
UNIONS F/F



(Unit: inch)

Size	1/4	3/8	1/2	3/4	1	1 1/4	1 1/2	2	2 1/2	3	4
A _{1.5}	1.46	1.48	1.61	1.89	2.03	2.13	2.24	2.48	2.95	3.58	4.06
A1 _{0.5}	0.43	0.43	0.49	0.63	0.63	0.63	0.68	0.73	0.94	1.18	1.22
H _{0.5}	0.59	0.59	0.61	0.63	0.73	0.85	0.87	1.02	1.06	1.22	1.54
S1 _{1.0}	0.71	0.89	1.06	1.26	1.59	1.97	2.20	2.70	3.29	3.86	4.88
S2 _{1.0}	1.42	1.42	1.61	1.93	2.26	2.66	3.01	3.60	4.33	4.96	6.18

COUPLINGS



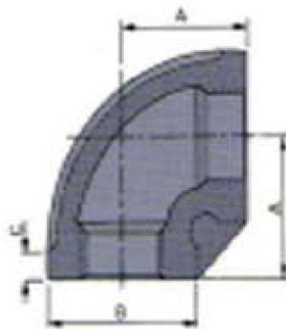
(Unit: inch)

Size	1/4	1/4	3/8	1/2	3/4	1	1 1/4	1 1/2	2	2 1/2	3	4	
A	NPT	0.79	1.06	1.18	1.42	1.54	1.68	1.89	1.89	2.20	2.56	2.80	3.27
	BSPT	0.79	1.06	1.18	1.42	1.54	1.68	1.89	1.89	2.20	2.56	2.80	3.27
	DIN	0.67	0.98	1.02	1.34	1.42	1.68	1.89	1.89	2.20	2.56	2.80	3.27
B	NPT	0.55	0.73	0.85	1.04	1.26	1.56	1.91	2.15	2.62	3.31	3.94	5.08
	BSPT	0.55	0.73	0.85	1.04	1.26	1.56	1.91	2.15	2.62	3.31	3.94	5.08
	DIN	0.55	0.73	0.85	1.04	1.26	1.56	1.91	2.15	2.62	3.29	3.74	4.80

STAINLESS STEEL SCREWED FITTING

- **150 LB / S/S NPT THREADED FITTINGS**
- **CF8 [304] & CF8M [316] , THREADS CONFORM TO ANSI B 2.1**
- **ALL FITTING DIMESIONS CONFORM TO ANSI B 16.2, MATERIAL PER ASTM STD.**

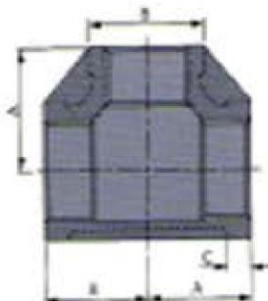
90° ELBOWS BANDED EQUAL



(Unit: inch)

spec. \ size	1/8	1/4	3/8	1/2	3/4	1	1 1/4	1 1/2	2	2 1/2	3	4
A	0.69	0.81	0.95	1.12	1.31	1.50	1.75	1.94	2.25	2.70	3.08	3.79
B	0.69	0.84	1.01	1.20	1.46	1.77	2.15	2.43	2.96	3.59	4.28	5.40
C	0.20	0.21	0.23	0.25	0.27	0.30	0.34	0.37	0.42	0.48	0.55	0.66

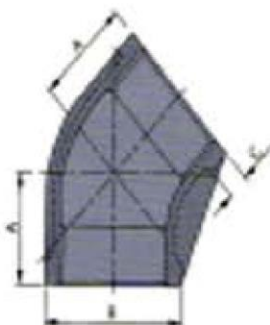
TEES BANDED EQUAL



(Unit: inch)

spec. \ size	1/8	1/4	3/8	1/2	3/4	1	1 1/4	1 1/2	2	2 1/2	3	4
A	0.69	0.81	0.95	1.12	1.31	1.50	1.75	1.94	2.25	2.70	3.08	3.79
B	0.69	0.84	1.01	1.20	1.46	1.77	2.15	2.43	2.96	3.59	4.28	5.40
C	0.20	0.21	0.23	0.25	0.27	0.30	0.34	0.37	0.42	0.48	0.55	0.66

45° ELBOWS BANDED EQUAL



(Unit: inch)

spec. \ size	1/8	1/4	3/8	1/2	3/4	1	1 1/4	1 1/2	2	2 1/2	3	4
A	0.59	0.73	0.80	0.88	0.98	1.12	1.29	1.43	1.68	1.95	2.17	2.61
B	0.69	0.84	1.01	1.20	1.46	1.77	2.15	2.43	2.96	3.59	4.28	5.40
C	0.20	0.21	0.23	0.25	0.27	0.30	0.34	0.37	0.42	0.48	0.55	0.66